



Moeding Keramikfassaden GmbH
 Ludwig-Girnghuber-Straße 1
 84163 Marklkofen
 Germany
 Fon +49 (0) 87 32 / 246-00
 Fax +49 (0) 87 32 / 246-69
 Internet: www.moeding.de

Patio Sevilla Céramique, Maastricht, NL

Design: Cruz y Ortiz Arquitectos, Sevilla/E,
 Architects: Hoen Architekten BNA
 Maastricht/NL
 Colour: Ziegelrot
 Surface: special surface finish



LONGOTON®

MOEDING CLAY-TILE FACADE

a ventilated and heat-insulated rainscreen cladding



The **LONGOTON®-Clay-tile façade** is our response to the increasing demand from planners and architects for large-format façade tile.

NEW dimensions:

Tile length from **150 mm** to **3000 mm**

Tile height from **150 mm** to **600 mm**

At Moeding **service** and **consultation** mean:

- Extensive planning tools
- Technical support in the planning and construction phases
- A strong outside and inside sales team
- Competent sales partners in more than 60 countries

We satisfy the desires of the planner

Quality

Quality assurance for façade tile involves continuous in-house monitoring, as well as regular external monitoring performed by test institutes in accordance with the specifications of the certification authority, "Güteschutz-Ziegel für das Land Bayern e.V.", (the Bavarian quality association for brick).

The back-ventilated and thermally insulated façade – ideal construction principle for exterior walls

Splitting up the construction-physical, i.e. technical functions of an exterior wall and assigning them to the different layers of the wall structure offers the following advantages:

- markedly reduced heat losses
- reliable protection from heat in the summer owing to optimum temperature amplitude attenuation by the wall structure and in the interior
- effective weather protection and drainage of moisture
- easy planning and assembly

Owing to its excellent material properties the MOEDING clay-tile façade system additionally guarantees

- high resistance against aggressive environmental effects of any nature
- uniform weathering
- long life and high cost-effectiveness
- usability for new buildings and refurbishment
- high architectural design quality.

Rainscreen façades in present-day building

Conventional monolithic wall structures fulfil their construction-physical functions only to a limited extent. Rainscreen systems, however, are better suited as the various functions are taken over by the individual constituents of the structure. Thus, each of the structural elements and their functions can be separately optimised (see figure 1):

- the load-bearing brick wall bears the static loads,
- the heat insulation is fitted to the outside of the building which is the correct arrangement from the construction physics point of view,
- the substructure for the façade cladding carries the weight of the tiles and diverts wind loads,
- any moisture diffused in the vapour state from the building interior towards the outside as well as water that has entered through the façade are reliably dispersed by the ventilation system within a defined gap between thermal insulation

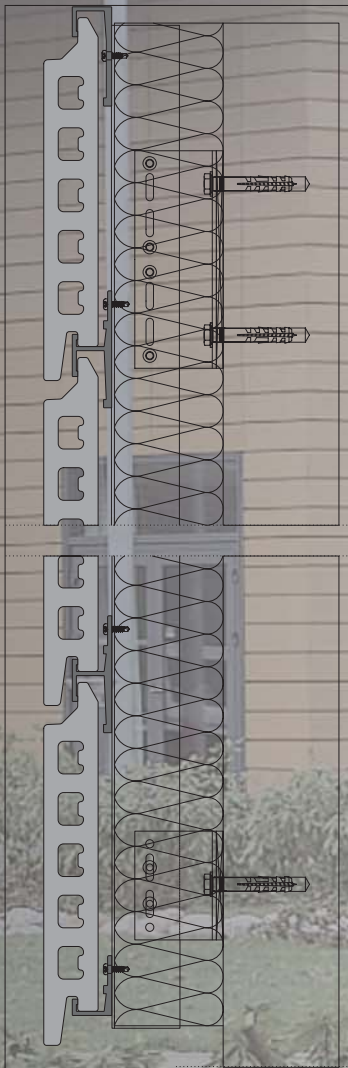


Figure 1
Consistent function separation in the wall construction





City hall Tinglev/DK

Architects: Blaavand & Hansson A/S,
Røddekro/DK

Colour: special colour

Surface: standard



Police Headquarters Dillenburg

Architects: Rohrbach & Schmees, Gießen

Colour: Ziegelrot

Surface: standard



Figure 2
Basic components of the LONGOTON® façade

Material and structure

In addition to the classic MOEDING façades, the ALPHATON® tile façade with lengths ranging from 150 to 900 mm, the new LONGOTON® tile façade handles the lengths from 900 to 3000 mm in 1 mm steps.

The structure consists of the basic components: Tile, aluminum tile holders, and aluminum joint profiles. Alternatively a horizontal aluminum support profile in accordance with the familiar MOEDING ALPHATON® system can be used.

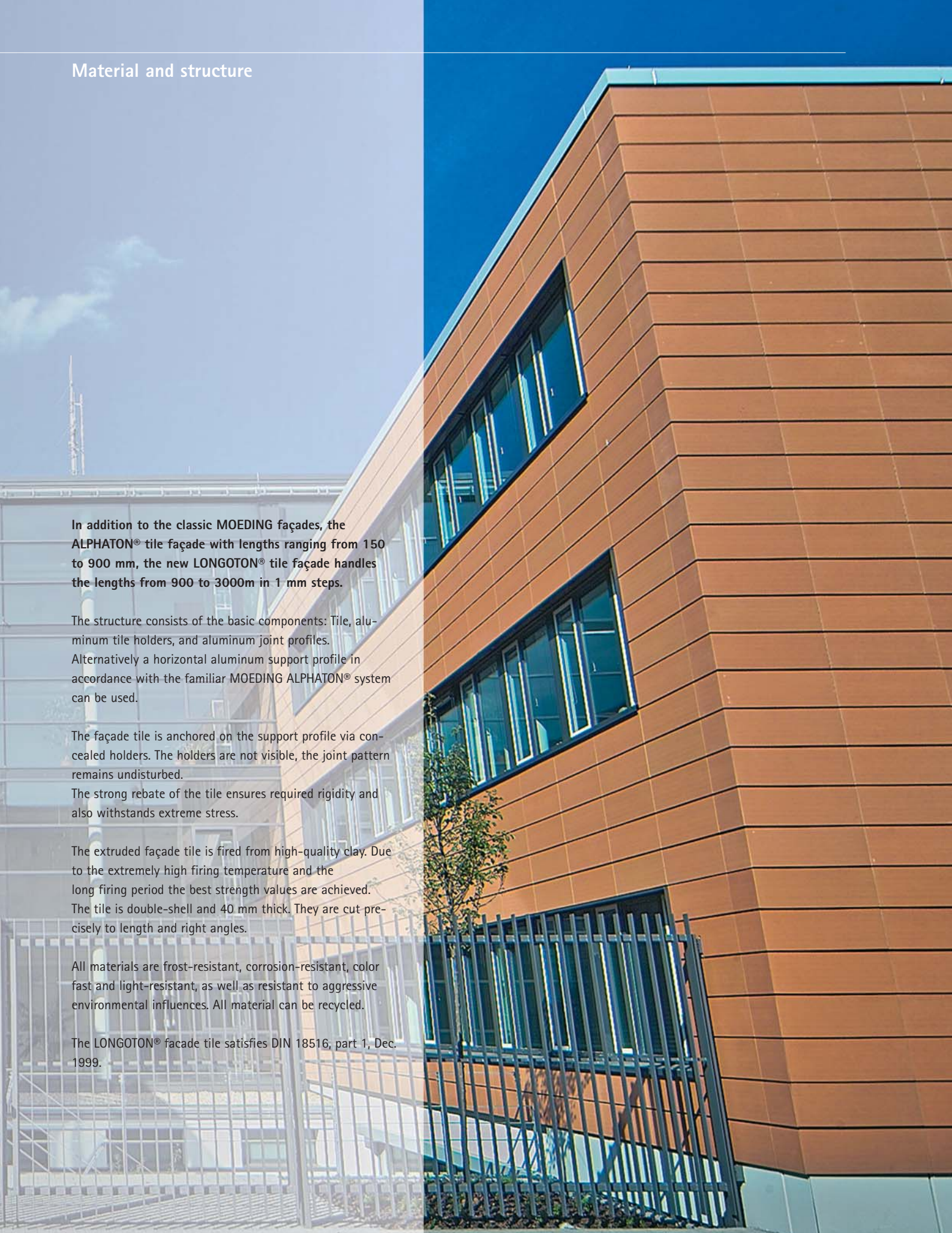
The façade tile is anchored on the support profile via concealed holders. The holders are not visible, the joint pattern remains undisturbed.

The strong rebate of the tile ensures required rigidity and also withstands extreme stress.

The extruded façade tile is fired from high-quality clay. Due to the extremely high firing temperature and the long firing period the best strength values are achieved. The tile is double-shell and 40 mm thick. They are cut precisely to length and right angles.

All materials are frost-resistant, corrosion-resistant, color fast and light-resistant, as well as resistant to aggressive environmental influences. All material can be recycled.

The LONGOTON® facade tile satisfies DIN 18516, part 1, Dec. 1999.





Headquarters Sparkasse Vogtland,
Plauen/D

Architects: OBERMEYER ALBIS-BAUPLAN,
Plauen
Colour: Ziegelrot
Surface: sand blasted



Apartement house Euskirchen

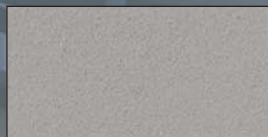
Architects: Landsberg, Euskirchen

Colour: Terracottabeige

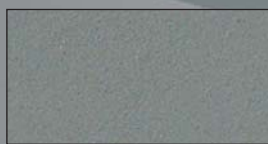
Surface: standard



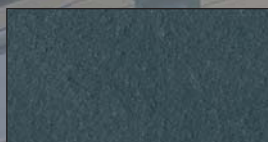
Creme



Titangrau



Graphitgrau



Vulkangrau



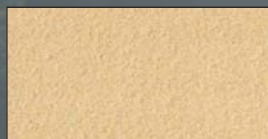
Rubinrot



Ziegelrot

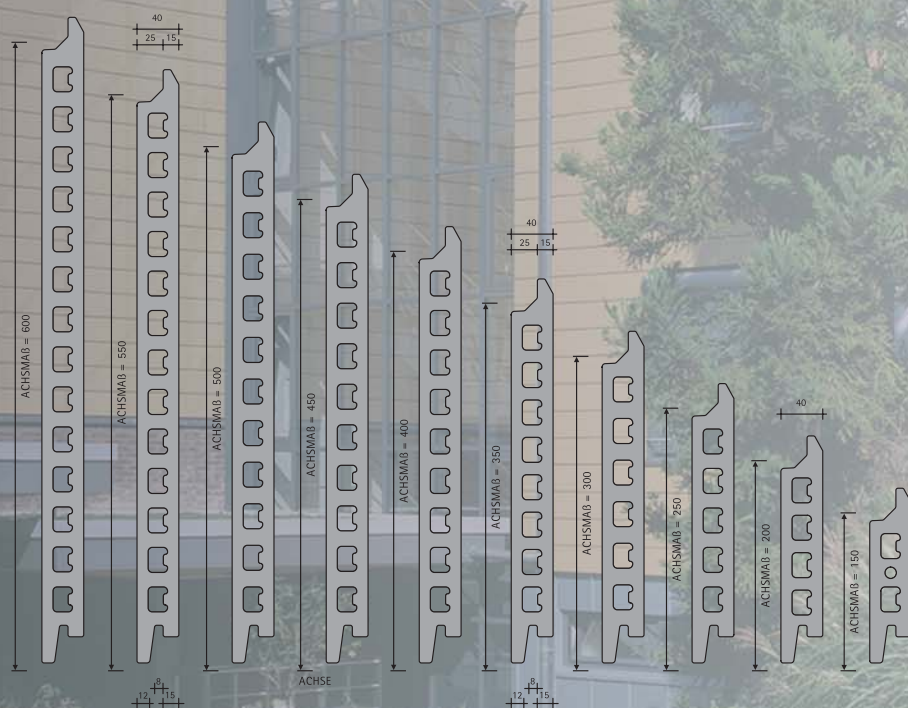


Terracottagelb



Terracottabeige

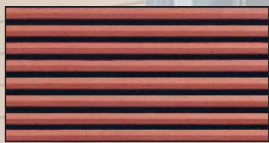
Tile height	Tile lenght
150 mm	150 bis 3000 mm to 1mm steps
200 mm	
250 mm	
300 mm	
350 mm	
400 mm	
450 mm	
500 mm	
550 mm	
600 mm	

Figure 3
Formats

Oberflächen

The colors and surfaces listed here represent our standard product line.

Additional surface structures, glazed surfaces, various special shapes, such as visual screening or shading, as well as a broad spectrum of colors are also available.



ribbed panel



waved facade



grooved facade



deep grooved facade

